

CERTIFIED LAND CORNER RECORDATION

DESCRIPTION OF CORNER EVIDENCE FOUND, AND ORIGINAL RECORD (If known)

T 15N, R 68W

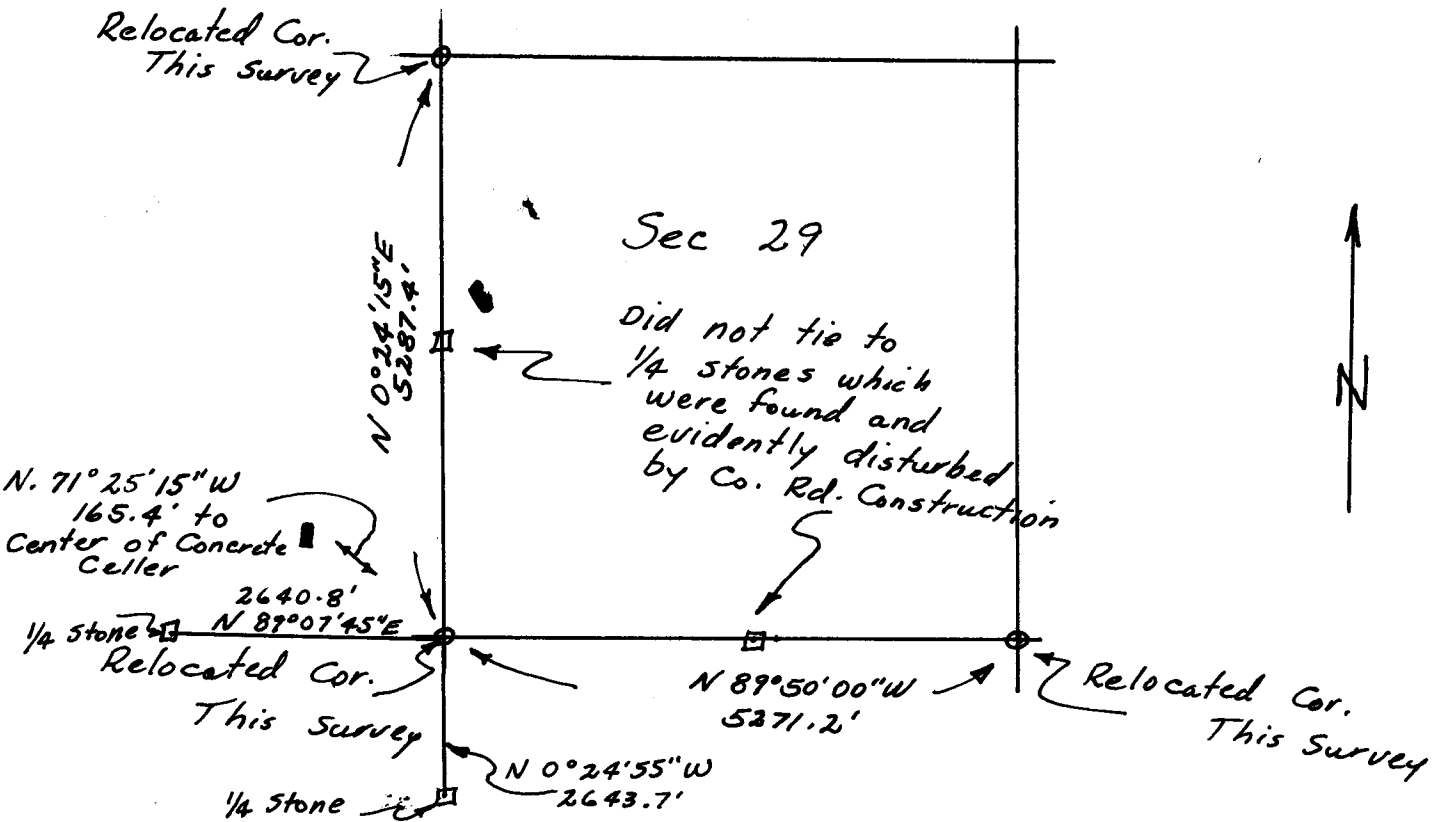
30	29
31	32

Found Granite Boulder 15"x10"x7" lying loose, evidently disturbed by old County Road Construction.

DESCRIPTION OF MONUMENT AND ACCESSORIES ESTABLISHED TO PERPETUATE THE ORIGINAL LOCATION OF THIS CORNER:

Using methods prescribed in "The Manual" I relocated the corner, setting a #5 Rebar with SurvKap marked 29,30,31,32. I also reset Corner Stone adjacent to and on North side of Rebar.. Stone contains 5 marks east face and one mark on South face.

SKETCH, WITH COURSE AND DISTANCE TO ADJACENT CORNER IF DETERMINED IN THIS SURVEY. (May Sketch or Paste Reproduction on Reverse Side.)



I, Edward C. Fry certify that I have carefully performed or reviewed the work done on the diagrammed corner as reported on this recordation form and approve the same.

Edward C. Fry
Signature of Surveyor

662
Registration No.

STATE OF WYOMING,

Office of Clerk and Recorder,

County of Taramie

This "corner record" was filed for record on the 18 day of August, 19 76, was noted on the cross-index plat and is assigned page No. _____, in book No. _____.

James C. Whithead
County Official

Cross Index No. _____	T. _____	R. _____	Mer. _____
_____	T. _____	R. _____	Mer. _____
_____	T. _____	R. _____	Mer. _____
_____	T. _____	R. _____	Mer. _____
_____	T. _____	R. _____	Mer. _____
_____	T. _____	R. _____	Mer. _____
_____	T. _____	R. _____	Mer. _____